



**EUROPEAN GATEWAY
FOR DRY BULK**

A SOLID TRACK RECORD. MASSIVE OPPORTUNITIES. MAKE IT HAPPEN.

ALL-ROUND SERVICE FOR DRY BULK

destined for the major players in Europe's most prominent industrial centers. Rotterdam is a vital link in their logistics chain.

Transhipment, storage and services

The port accommodates a wide variety of independent transhipment companies, thus always assuring customers accessibility to the right ratio between price and quality. Add to this the dedication of highly trained port personnel, and the choice is not hard to make.

For any dry bulk product, in large or small quantities, the port of Rotterdam offers all the required facilities for transhipment, storage, processing and distribution. The majority of dry bulk (78 million tonnes in 2019) is

Rotterdam always offers a customized solution:

- Transhipment at one of the modern terminals
- Large-scale storage capacity including covered storage facilities



- | | | | |
|-----|--------------------------------------|-----|-------------------------------------|
| 1 | EUROPEES MASSAGOED OVERSLAGBEDRIJF | 10c | BUOYS & DOLPHINS WAALHAVEN |
| 2 | ERSTOVERSLAGBEDRIJF EUROPOORT CV | 10d | DOLPHINS MAASVLAKTE |
| 3 | ADM EUROPOORT | 11 | STUWADOORSBEDRIJF A. BRUSSÉ & ZN BV |
| 4 | EUROPEAN BULK SERVICES (2 TERMINALS) | 12 | BSR VAN UDEN STEVEDORING BV |
| 5 | ALCO ENERGY ROTTERDAM | 13 | C. STEINWEG HANDELSVEEM BV |
| 6 | EUROPEAN METAL RECYCLING | 14 | MARCOR STEVEDORING |
| 7 | EP STEVEDORING | 15 | MENEBA |
| 8 | JEWOMETAAAL STAINLESS PROCESSING | 16 | ZHD STEVEDORES |
| 9 | RIO TINTO MINERALS ROTTERDAM/BORAX | 17 | TRANSTERMINAL DORDRECHT |
| 10a | BUOYS & DOLPHINS CALANDKANAAL | 18a | AGRO DELTA |
| 10b | BUOYS & DOLPHINS BOTLEK | 18b | AGRO DELTA |

- Value added services such as screening, grinding, crushing, blending and packing
- A large amount of buoys and dolphins for ship-to-ship transfer

An extensive network of transport connections: rail, inland shipping, road and pipelines. This ensures access to European destinations in the hinterland within 24 hours. It's all available, right in the port, including financial services, cargo inspections and logistics services.

Excellent accessibility

One of Rotterdam's strongest points is its excellent accessibility for sea-going vessels and its unprecedented possibilities for the efficient and cost-effective transport of large quantities of

dry bulk to European locations further inland. Through the Euro Channel, large bulk carriers with draft up to 23 meters can reach the port under any condition. Even bulk carriers up to 400,000 tonnes DWT can be accommodated in certain parts of the port. The port is not restricted by means of locks or tides.

In terms of moving dry bulk to destinations in the hinterland the customer can benefit from the port's location at the estuary of the Rhine and Meuse rivers. A single inland push-barge can transport 15,000 tonnes of iron ore, coal or other dry bulk in a single trip to and from locations far inside the European hinterland up to the Black Sea. Not only inland shipping, but also shortsea, trucks and railroads are attractive alternatives for European distribution. Last but not least, Rotterdam is connected to the German rail network via the only European



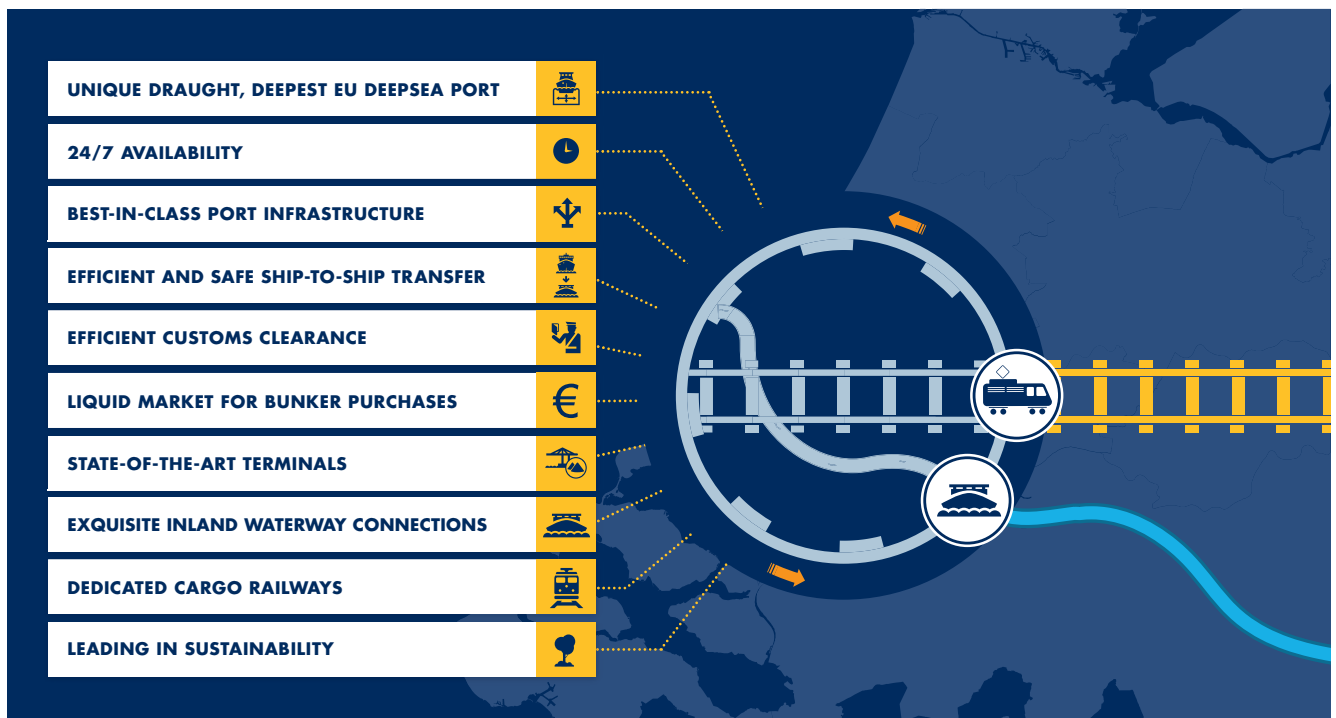
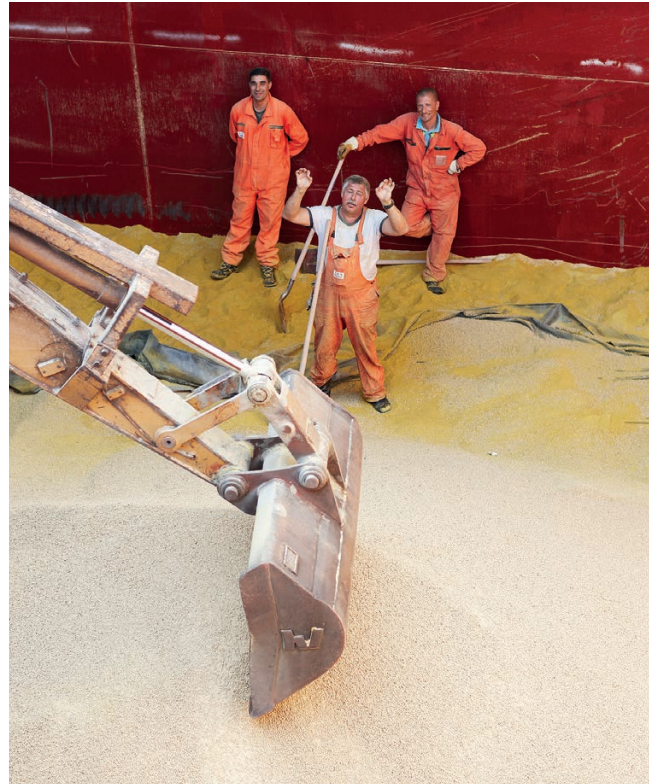
dedicated freight railway line, called the Betuwe Route. This railway line offers a direct link to the European rail network.

Ship-to-ship facilities

Besides land based terminals, the port of Rotterdam has a wide variety of buoys and dolphins available for ship-to-ship transfers of dry bulk cargo. The utilisation of these public facilities, located in Calandkanaal, Botlek, Waalhaven and Maasvlakte 2, is managed by the Port of Rotterdam Authority. Floating equipment and transshipment services are provided by a number of private companies. The available water depth of the buoys and dolphins varies from approximately 9.65 meters up to 23.65 meters.

USP's Port of Rotterdam

- Wide variety of transshipment, storage and processing facilities
- Unlimited deep-sea access for all types of vessels
- Short turnaround times
- Ship-to-ship transfer possibilities
- Excellent hinterland connections
- Ideal transshipment port for shortsea distribution.



Port of Rotterdam Authority

The objective of the Port of Rotterdam Authority is to enhance the port's competitive position as a logistics hub and world-class industrial complex. Not only in terms of size, but also with regard to quality. The Port Authority is therefore leading the transition to sustainable energy and it is committed to digitalisation in order to make the port, and the supply chain, more efficient. The core tasks of the Port Authority are to develop, manage and exploit the port in a sustainable way and to deliver speedy and safe service for shipping.

More information

Port of Rotterdam Authority • P.O. Box 6622 • 3002 AP Rotterdam • The Netherlands • +31(0)10 252 1230